

CLERK'S OFFICE

APPROVED

5/19/98

date:

Submitted by Chairman of the Assembly at the
Request of the Mayor
Prepared by: Anchorage Water & Wastewater
Utility
For reading April 28, 1998

ANCHORAGE, ALASKA

AR NO. 98-140

**A RESOLUTION APPROVING CONSTRUCTION OF THE GRANITE VIEW
WATER MAIN EXTENSION (W96-041A), AND PROVIDING FOR THE
EVENTUAL ASSESSMENT AGAINST BENEFITED PROPERTIES.**

WHEREAS, Alaska State Statute 42.05.385 and AMC 19.90.010(B) mandate that when a water line extension will create, or has the potential of creating, any charge or assessment against the adjacent property, the water line extension may not be constructed unless the legislative body of each municipality through which the extension passes has approved the extension.

WHEREAS, the Anchorage Water and Wastewater Utility (AWWU) has received application from a Developer to extend a water line under AWWU's water main extension agreement process, to serve property along Claridge Place, North Circle and South Circle, within Granite View Subdivision in Anchorage.

WHEREAS, the extension of the water line will specially benefit and provide water service to an additional four (4) properties (reimbursable properties), and in doing so, will create potential assessments against them.

NOW THEREFORE, THE ANCHORAGE ASSEMBLY RESOLVES:

SECTION 1. It is in the best interest of the community that said water main improvement proceed.

SECTION 2. The Developer shall keep, and provide to the AWWU, an accurate account of all costs of the water main improvements.

SECTION 3. Approximate costs for water main construction have been provided by the Developer and these costs are allocated, to each specially benefited parcel, as estimated on the attached water assessment roll per the AWWU Water Tariff.

SECTION 4. After the watermain improvements have been completed and AWWU has received and approved the record drawings and certified project costs for the improvements, the Mayor shall cause the computation of all applicable assessment charges. At such time as each of the four reimbursable

RETURN TO:

Anchorage Water & Wastewater Utility
Private Development
3000 Arctic Boulevard
Anchorage, Alaska 99503-3898
(907) 564-2747

AM 412-98


Page 2
Granite View
W96-041
AR 98-140

properties cited on the attached assessment roll connect to the water main, the respective pro-rata assessment for the water line shall be levied in accordance with Municipal Codes and the AWWU Water Utility Tariff in effect at the time the assessment is levied.

SECTION 5. A Special Assessment Collection Charge, as authorized in Section 3.2(c)(2) of the Water Utility Tariff, in effect at the time the assessment is levied, will be charged to those properties identified in this resolution.

SECTION 6. This resolution shall take effect immediately upon passage and approval by the Anchorage Municipal Assembly.

PASSED AND APPROVED by the Anchorage Municipal Assembly this
19th day of May, 1998.


Chairman

ATTEST


Municipal Clerk

AN



Granite View Subdivision

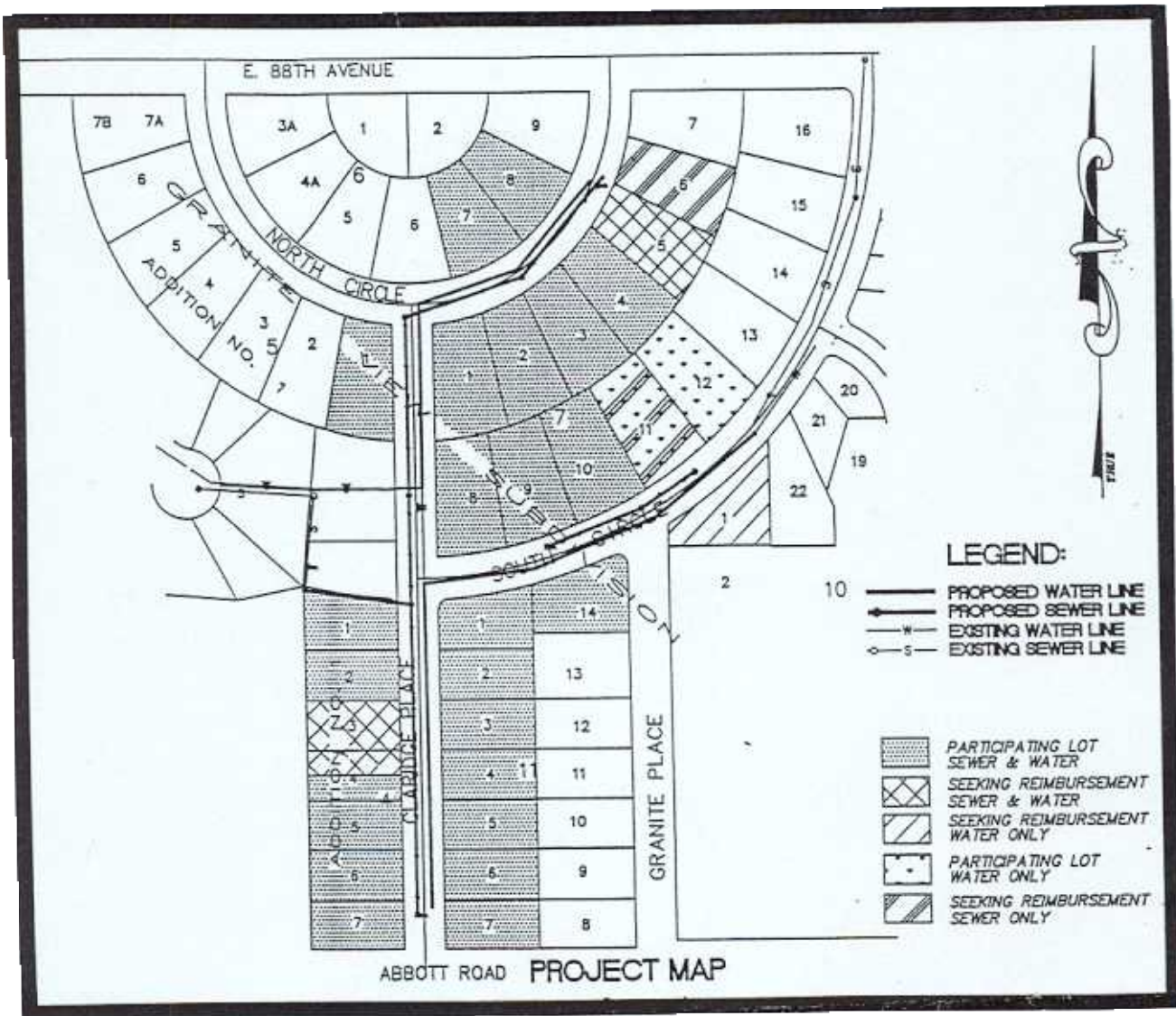
Estimated Water Assessments

W96-041A

Estimated Rate = \$0.339363

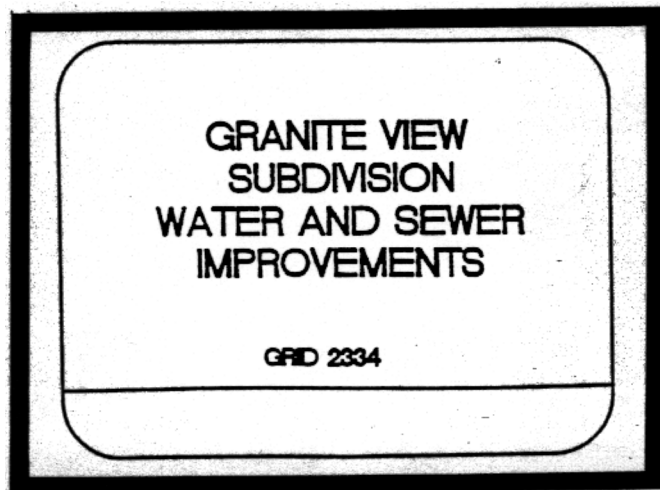
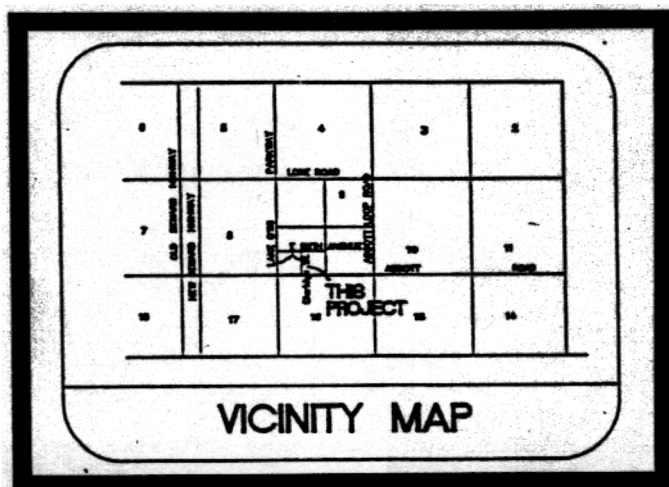
			Assess.	Estimated
Tax Code	Block	Lot	Area	Assess.
014-301-19	4	3	9,995	3,391.94
014-301-20	4	N2, 4	4,998	1,696.14
014-302-13	7	5	14,375	4,878.35
014-302-42	10	1	13,575	4,606.86

(All Parcels S.M., ALASKA)



043950 24-
ANCHORAGE
RECORDING DISTRICT

1999 JL -9 AM 11:29
REQUESTED BY
MOA



Granite View Subdivision
Estimated Water Assessments
W96-041A

Estimated Rate = \$0.339363

Tax Code	Block	Lot	Assess.	Estimated	Owner
			Area	Assess.	
014-301-19	4	3	9,995	3,391.94	BARNARD, Earl R & Marguerite
014-301-20	4	N2, 4	4,998	1,696.14	BARNARD, Earl R & Marguerite
014-302-13	7	5	14,375	4,878.35	GUTHRIE, John B
014-302-42	10	1	13,575	4,606.86	SHOWALTER, Lorraine D